

IS/18
dated --.--.2018

Information Message on PRANA Predictive Analytics and Remote Monitoring System

On --.--.2018, PRANA predictive analytics and remote monitoring system has detected deviation of HRSG (KUP-110/15-8.0/0.7-540/200 st. 1) technical condition in the control valve of high pressure tank (HPT) feeding (01HAC14AA902XJ117) during the period from --.--.2018.

Observed change in the control valve throughput capacity (Fig. 1). This leads to the deterioration in the quality of level control in the drum.

The probable causes of detected deviation are:

1. Mechanical damages to HPT feed control valve.
2. PEN-1A (01LAC22CP001XJ116) head pressure drop due to the increase in the throughput of PEN-1A automatic spill-back valve.

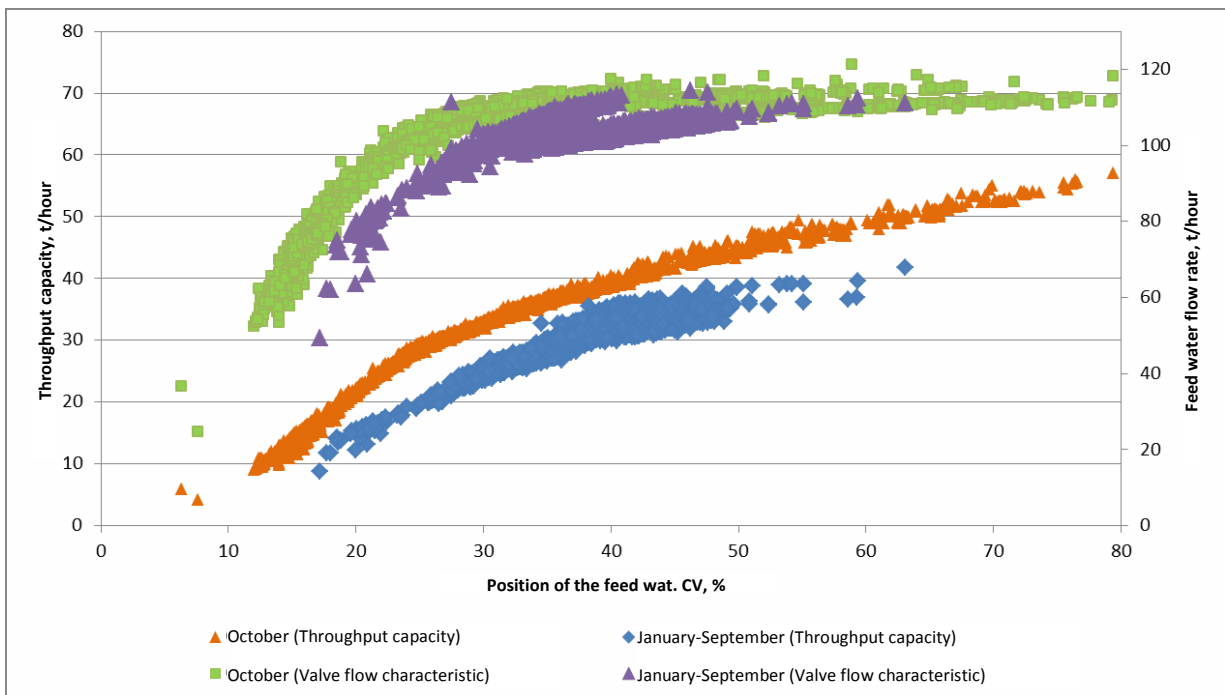


Fig. 1. Throughput capacity and flow characteristics of the feed water CV

It is recommended to:

1. Compare position at control valve location against the readings at control board WKS.
2. During the next planned shutdown, inspect the feed control valve in order to identify the causes of changes in throughput capacity.
3. During the next planned shutdown, inspect PEN - 1A automatic spill-back valve.
4. In order to improve the quality of recommendations, please provide feedback.

Chief Specialist

/Signature/

M.Yu. Chernetsky